

i-to-i

EARLY YEARS EDUCATION COURSES

BECOME A FULLY QUALIFIED EARLY YEARS PRACTITIONER



4.72 OUT
OF 5 STARS!

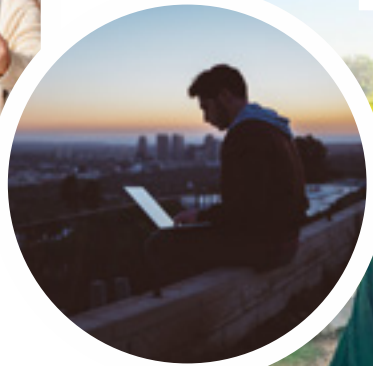
BASED ON
6400+ REVIEWS

CONTENTS

Start exploring! >>



p.04
WHY CHOOSE
I-TO-I?



p.12
EARLY
YEARS
EDUCATION
- COURSE



p.16
HEAR FROM OUR
AMAZING STUDENTS!



p.06
BECOME AN
EARLY YEARS
PRACTITIONER



p.18
MEET YOUR
SUPPORT TEAM



p.10
EARLY YEARS
EDUCATION COURSES



WHY CHOOSE *i-to-i*?

1

OUR WEALTH OF EXPERIENCE

We have been making dreams come true since 1994! We first launched as a TEFL brand and were the first company around the globe to provide TEFL classroom courses, and then the first to provide online TEFL courses back in 2001! Since then, we have used our thorough understanding of the education industry to launch other educational courses, including Trinity CertTESOL, A-Levels & GCSEs, Teaching Assistant courses, Early Years Education courses and Cover Supervisor & Supply Teacher courses. So, you're in good hands!

2

WE'RE ACCREDITED AND REGULATED

All of our courses are of the highest quality possible and have been externally regulated to confirm that fact. Our Early Years Education courses are accredited by QLS. The Quality Licence Scheme (QLS) is a charitable organisation that conducts robust and rigorous quality audits to ensure the highest quality standards are met. So, you can feel safe in the knowledge that you'll get the best training possible, and that your certificate will be recognised and respected by employers all over the world.

3

OUR TUTORS KNOW THEIR STUFF

Throughout your course you'll have guidance and support from our qualified tutors, who are highly trained in their areas of expertise and are ready to help you achieve your goals.

4

WE'VE TRAINED THOUSANDS OF TEACHERS

Our happy graduates number over 210,000! So, wherever you go in the world, you're bound to bump into fellow i-to-i alumni!

5

OUR STUDENTS LOVE US

On the unbiased review site www.reviews.co.uk, our students have rated us over 4.7 stars - we'll let the numbers speak for themselves.



BECOME AN *Early Years Practitioner*

Salary
Up to
£25,806
ZAR 236,460
\$44,969



Teachers are in demand all over the globe. The UNESCO Institute for Statistics estimates that, in order to meet global education needs, over 69 million new teachers will be needed by 2030. With so many opportunities available, there's never been a better time to begin your career in the education sector.

As an Early Years Practitioner, you'll be working closely with children up to the age of 5, this could include babies, toddlers, and pre-schoolers. You could be working in roles such as Early Years Teacher, Nanny, Childminder, Pre-School Assistant, or working in a nursery.

As an Early Years Practitioner, you will be responsible for looking after the day-to-day needs of young children. Your role will be extremely varied, so no two days will look the same! Your days will consist of changing, feeding, and organising fun, age-appropriate activities that will stimulate the children's educational, emotional, and physical development.

Being an Early Years Practitioner is a highly rewarding role, you'll be playing a vital part in the first few years of a child's life. You'll get to experience their newfound understanding of the world and witness all their 'firsts' – such as steps and words – which is a real privilege! Working as an Early Years Practitioner also opens up a range of career opportunities, as many go on to set up their own business, work in the education sector, or progress to managerial roles, such as an Area Supervisor.

SKILLS YOU'LL NEED TO BECOME AN EARLY YEARS PRACTITIONER

- Enjoy working with children
- Interest in child development
- Creative thinking
- Patience
- Enthusiasm
- Caring and kind natured

[VIEW EARLY YEARS COURSE >>](#)

[VIEW EARLY YEARS COURSE >>](#)



A DAY IN THE LIFE OF AN EARLY YEARS PRACTITIONER

Here are a few of the day-to-day tasks you will be doing when you become an Early Years Practitioner

- Organising and running fun activities (stories, messy play, sand pit)
- Looking after the day-to-day needs of children (feeding, nappy changing, toilet training)
- Administering first aid (if required)
- Developing close and trusting relationships with the children in your care
- Safeguarding children & reporting concerns
- Monitoring the children's development and progression
- Reporting back to parents on their child's developmental progression



“ I am enjoying my course. My tutor is always available to help me. I really feel like I am on my way to becoming a deputy manager in a nursery setting, will update review once I finish my course and have got my certificate ”

Sophie, Aug 2021

TOP REASONS TO BECOME AN EARLY YEARS PRACTITIONER

Play a vital role in the first few years of a child's life

Progress into Early Years managerial roles, such as Area Supervisor

Flexible and rewarding role

[VIEW EARLY YEARS COURSE >>](#)

EARLY YEARS EDUCATION COURSES

Become a fully qualified Early Years Practitioner

Our Early Years Education courses will fully equip you with the knowledge and skills you need to teach young children up to the age of 5. The first stages of a child's development are critical in their long-term learning, and your teaching input will have a lasting effect on the child's educational development and wellbeing.

Who should take an Early Years Education Course? Anyone who has lots of passion and energy and wants to make a lasting impression on children, whilst they're at nursery, kindergarten, or creche.

These courses will equip you with the theory you need to become a fantastic and well-rounded Early Years Practitioner.

WHAT CAN I EXPECT?

1. Start a career as an Early Years Practitioner, working with children from 0 to 5 years old
2. Increase earning potential through higher qualification
3. Study through our world-class online learning platform, at your own pace
4. Well-structured and easy-to-digest study material
5. Tutor support throughout your studies
6. Accredited qualification from Quality Licence Scheme (QLS)

[VIEW EARLY YEARS COURSE >>](#)

[VIEW EARLY YEARS COURSE >>](#)



Course Breakdown



Early Years Education – Course Children and Young People’s Workforce Early Learning and Childcare (Level 3)

Our Level 3 Early Years course is ideal if you’re looking to work with children.

This course details the best practices, skills, and knowledge you’ll need to work professionally with young learners.

You’ll complete this course through our online learning platform, meaning you have full flexibility to fit your studying around your own schedule. Alongside the online learning, there will be a direct observation required in order to complete the course. You can start the course and arrange the observation whilst you complete the theory aspect of the course.

The course has been created in line with the full QFC Qualification, and should you wish to go on to complete the Level 3 Diploma, you will tick off a large part of the theory within this course.

You do not need any prior experience or previous qualifications to take this course, it’s the perfect option for those looking to make a breakthrough into the Early Years teaching profession.

This course takes approximately 120 hours of learning to complete.

Promote Equality and Inclusion in Health, Social Care or Children’s and young people’s Settings

The learning outcomes for this unit are:

- Promote Equality and Diversity in Work with Children and Young People
- The Impact of Prejudice and Discrimination on Children and Young People
- Support Inclusion and Inclusive Practices in Work with Children and Young People

MODULE 1

Understand Child and Young Person Development

The learning outcomes for this module are:

- Expected Patterns of Development
- Factors That Influence Children’s Development
- Monitoring Development and Making Interventions
- Interventions to Support the Language and Communication Needs of Children
- How Transitions Affect Development

MODULE 2

Promote Child and Young Person Development

The learning outcomes for this module are:

- Assess the development needs of children or young people and prepare a development plan
- Promote the development of children or young people
- Support the provision of environments and services that promote the development of children or young people.
- Understand how working practices can impact on the development of children and young people.
- Support children and young people’s positive behaviour
- Support children and young people experiencing transitions

MODULE 3

Understand how to Safeguard the wellbeing of Children and Young People

The learning outcomes for this module are:

- Main legislation, guidelines, policies and procedures for safeguarding children and young people
- Working in partnership with other organisations to safeguard children and young people
- Ensuring children and young people are protected from harm in the work setting
- Respond to evidence or concerns of abuse or harm
- Respond to evidence or concern of bullying
- Work with children and young people to support their safety and wellbeing
- E-safety for children and young people

MODULE 4





Support Children and Young Peoples' Health and Safety

The learning outcomes for this module are:

- Plan And Provide Environments and Service That Support Children and Young People's Health and Safety
- Recognise And Manage Risks to Health, Safety and Security in Work Setting or Off Site Visits
- Support Children and Young People to Assess and Manage Risk for Themselves
- Respond to Accidents, Incidents, Emergencies and Illness in the Work Setting and Off Site Visits

MODULE 5

Working Together for the Benefit of Children and Young People

The learning outcomes for this module are:

- Recognise the importance of Multi Agency working
- Work in partnership with other practitioners
- Appropriate Communication Methods for Different Circumstances

MODULE 6

Promote Learning and Development in the Early Years

The learning outcomes for this module are:

- Understand the purpose and requirements of the areas of learning and development in the relevant early years framework
- Plan work with children and support children's participation in planning
- Promote children's learning and development according to the requirements of the relevant early years framework
- Engage with children in activities and experiences that support their learning and development
- Review own practice in supporting the learning and development of children in their early years

MODULE 9

Promote Children's Welfare and Well Being in the Early Years

The learning outcomes for this module are:

- Understand welfare requirements
- Support hygiene and prevention of cross-infection the early years settings
- Safe systems
- Provide physical care for children
- Children's health and wellbeing

MODULE 10

Understand How to Support Positive Outcomes for Children and Young People

The learning outcomes for this module are:

- Factors that impact on the lives of children and young people
- How practitioners make a positive difference in the outcomes for children and young people
- The possible impact of disability on positive outcomes for children and young people
- The importance of equality, diversity and inclusion in promoting positive outcomes for children and young people

MODULE 7

Context and Principles for Early Years Provision

The learning outcomes for this module are:

- The Principles of Early Years Frameworks
- Adapting the environment to meet Individual needs
- Partnership Model of Working with Carers

MODULE 8

Professional Practice in Early Years Settings

The learning outcomes for this module are:

- Understanding the scope and purposes of the early years sector
- Support diversity, inclusion and participation
- How to reflect on your own practice
- Understand current policies and influences on the early years sector

MODULE 11

Support Children's speech, Language and Communication

The learning outcomes for this module are:

- Understand the importance of speech, language and communication for children's development
- Understand the importance and benefits of adults supporting the development of speech, language and communication development
- Provide support for speech, language and communication development
- Contribute to maintaining a positive environment that supports speech, language and communication

MODULE 12

OUR CUSTOMERS SAY

'EXCELLENT'!

4.72 OUT OF 5 STARS!

6400+ REVIEWS!



HEAR FROM OUR AMAZING STUDENTS!



We really are here for you the whole way through, and we love helping you to succeed! From selecting the right course for you to supporting you with your studies, we're with you every step of the way. You don't need to just take our word for it though, check out what our amazing students have to say!

"I've done quite a lot of online courses in my life, but this course exceeds all expectations. The support you get from the tutors is absolutely amazing. They are so encouraging and helpful! Thank you for delivering excellence!"

Johanna 18/01/2022



"I have recently just completed a couple of courses with i-to-i. What an incredible team! From the admin team to the academic team, to Jordan from the jobs team, who has been a superstar assisting me with my CV and where to find the ideal job!"

Michele 17/01/2022 ★★★★★



"Not your average distance-learning experience. These guys and gals are in a league of their own. I've tried and I really cannot come up with a single thing to fault them on"

Jolanda 24/01/2022 ★★★★★



"Had the best year of my life living and working abroad in Thailand and Vietnam. Thank you i-to-i team for always being there for your students!"

Britainy 01/02/2022 ★★★★★



"I have studied at various Universities (Harvard, Oxford Brooks, Unisa, Dublin Business School) all over the globe, and I have never had the level of support from any other institutions as the amount of support I received at i-to-i!"

Debby, 30/01/2022 ★★★★★



SEE MORE REVIEWS HERE!>>

Meet YOUR SUPPORT teams



THE CUSTOMER SUPPORT TEAM

Find yourself fighting with technology?
Our customer support team are here to save the day! If you have any issues accessing the platform for your course, or downloading your certificate, they will sort it out for you in no time!

THE ADVISOR TEAM

Anything these guys don't know about educational courses isn't worth knowing! They are an amazing bunch of friendly experts, who will help you select the right course for your needs, so you can follow your dreams.



THE ACADEMIC SUPPORT TEAM

A great set of people to have in your corner if you find yourself stumped by a section of the course! This wonderful team will come to your rescue ASAP and talk you through anything you need help with, so you can keep momentum and get your qualification!!



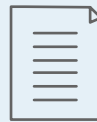
Say Hello!



[Request a call back »](#)



[Visit us online »](#)



[Read our blog »](#)



[hello@i-to-i.com »](mailto:hello@i-to-i.com)

CALL OUR TEAM AT YOUR LOCAL RATE

UK: +44(0) 113 205 4610

USA: 877 526 3959

South Africa: 021 300 2852

