

*i-to-i*

PAID TEFL  
**INTERNSHIP**

SOUTH KOREA

MAKING TEFL  
ADVENTURES HAPPEN  
SINCE 1994







EXPLORE SOUTH KOREA  
**TEACH ENGLISH.**  
*make memories!*

---



# CONTENTS

To your next destination »



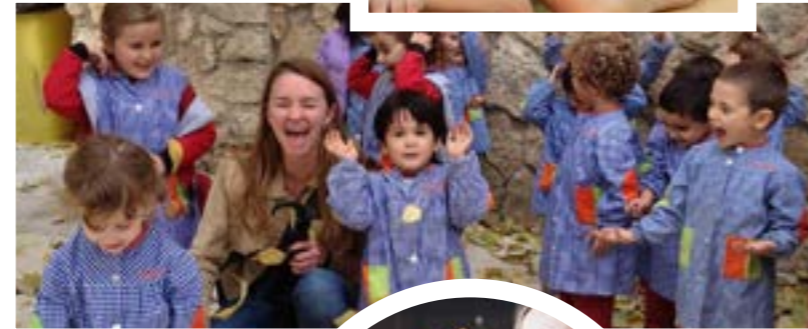
**p.06**  
TEACH ENGLISH IN  
SOUTH KOREA  
WITH i-to-i TEFL



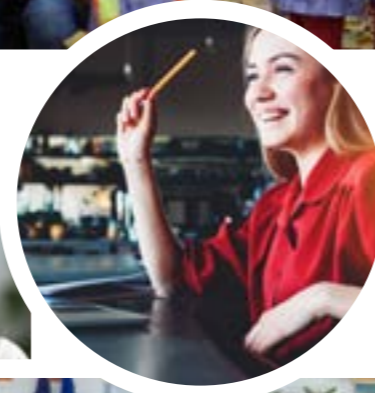
**p.08**  
WHAT'S  
INCLUDED?



**p.12**  
YOUR TEFL  
INTERNSHIP  
PREPARATION



**p.16**  
THE TEFL  
COURSE



**p.20**  
YOUR SPECIALIST  
COURSE

**p.18**  
COURSE  
BREAKDOWN



**p.22**  
WHAT'S  
MY ROLE?



**p.28**  
FREQUENTLY  
ASKED QUESTIONS



**p.24**  
WHERE WILL  
I BE PLACED?



**p.26**  
WHAT'S  
THE COST?





# TEACH ENGLISH IN SOUTH KOREA WITH i-to-i TEFL

If you like the idea of getting paid to teach and travel, whilst exploring a stunning new country – our Paid South Korea TEFL Internship is right up your street! Spend 12 unforgettable months exploring everything South Korea has to offer from vibrant, bustling cities to lush mountainous national parks and emerald green forests all while getting real teaching experience!



## BACK TO BASICS! WHAT IS TEFL?

TEFL just means Teaching English as a Foreign Language! If you've been dreaming of earning money while you travel, making unforgettable memories and learning a sparkly new skill, TEFL is pretty much perfect for you!

During your Internship, you'll earn an amazing salary which is yours to spend as you wish. With safe, clean accommodation included, we'll take away the hassle and cost of sorting somewhere to live! Plus, with your teaching placement sorted for you, visa help, ongoing in-country support and an online cultural orientation, you'll have everything sorted for you, leaving you free to focus on the fun bits!

Our qualifications, accreditations and friends:





# WHAT'S INCLUDED?

12 months'  
practical teaching  
experience

Airport pick-  
ups & transfers

COMPLETION  
BONUS  
of US\$1700-1900  
(£1,200-1,350)

US\$1700 -  
\$1900  
(£1,200-£1,350  
salary per month)

TEFL  
Internship  
Preparation  
Course

1-WEEK  
ONLINE  
orientation

P  
A  
I  
D  
HOLIDAYS  
8-15  
DAYS

A  
CCOMMODATION

ACADEMIC  
& in-country  
support  
throughout

V  
ISA  
support

One way  
flight  
reimbursement

The beauty of our Internships is that we organise everything for you – from getting TEFL qualified to sorting free accommodation, we've got your back!!

Before you hop onto that plane, we'll make sure you're fully prepared with our UK Government regulated, and US Government approved TEFL course, Internship Preparation Course, and Teaching in South Korea course designed for your internship.

You'll also benefit from full support before and during your internship through our dedicated Customer Support Team and our trusty in-country partners. Our in-country partners, Xplore Asia will be there for you every step of the way. From visa guidance and flight assistance, to training and full job support. If you need anything, they'll be there to help you!

Our support doesn't end when the internship's over. Although it's not something you want to think about now, you may want to come back home! We'll be there post-internship to offer further guidance, or other travel opportunities.

REGISTER YOUR INTERST >>



WHAT DO I NEED?



- To be a fluent English speaker
- To hold a passport from UK, Ireland, USA, Canada, Australia or New Zealand
- To be aged between 21-35 (exceptions on a case-by-case basis)
- To hold a bachelor's degree or above
- A clean police check
- No visible tattoos (must be covered)
- To be in good health



WHAT YOU DON'T NEED:



- Prior teaching experience
- A second language



VISIT SOUTH KOREA INTERNSHIP >>





# YOUR TEFL INTERNSHIP PREPARATION

You'll kick off your TEFL internship journey by completing our Level 3 120-Hour TEFL course, jam-packed full of all the information you need to know to become an awesome TEFL teacher. This course will need to be completed ready for your application process to South Korea.

Your 120 hour TEFL Course typically takes between 2-6 weeks to complete and you'll need this for your visa application - so make sure you give yourself a good amount of time to complete it.

Then, to further help you during your time in South Korea we've created a Teaching in South Korea Course. But that's not all! We've designed an Internship Preparation Course which includes 3 Specialist Courses to help you prepare for your TEFL internship, so when you get to South Korea you can relax and enjoy your teaching and travelling experience to the max!

Option to pay in  
2 instalments

NEW

## WHAT YOU'LL RECEIVE

- 120 hours of TEFL learning
- 3 specialist courses
- Teaching in South Korea
- Flexible online studying 24/7 from any device
- Support and feedback from DELTA-qualified tutors
- Highly respected qualification by employers internationally
- Boosted earning and employment potential

# What's included...

## PART 1

### LEVEL 3 *120-Hour* TEFL COURSE

(typical course completion time is between 2 and 6 weeks)

## PART 2

### TEACHING IN *South Korea* COURSE

## PART 3

### *Specialist Courses*

- **Classroom behaviour**  
Any intern teaching will need to handle behaviour in the classroom so we've included this as part of your training to help you hit the ground running.
- **Confidence building**  
Travelling to a foreign country, adapting to a new culture, and setting foot into a classroom to teach can be a daunting experience - this course will give you confidence you need.
- **Writing blogs**  
Whether you want to make some extra money or keep a log your experience, being able to write high quality blogs is a great skill to have.



LEVEL 3  
**120 Hour Online**  
TEFL COURSE IN A NUTSHELL

**PRO TIP:** If you want to get some face-to-face training, we offer a [Level 3 140 Hour Combined TEFL Course](#) which gives you 20 hours of classroom training on top of your 120 hours of online learning!



Ofqual-regulated,  
Level 3 qualification



Globally recognised and  
respected by employers

Flexible online studying  
24/7 from any device



Study from your laptop,  
phone, tablet or computer



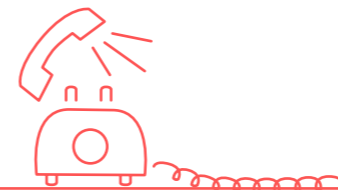
Access to our TEFL Jobs  
Board with 1000s of  
roles available!



Practical advice  
from our in-house  
Customer Support Team



Developed with leading  
language schools



Unrivalled support and  
feedback from our  
dedicated tutors

BUY NOW >>

PAY IN 2 >>





# THE TEFL Course

Before you swap your boots for flip-flops, you'll need to complete your 120 Hour Online TEFL Course, which is included in your Internship package.

Your 120 Hour TEFL Course is designed to give you the essential knowledge you need to excel in your TEFL internship. With videos, quizzes and interactive activities it should be fun and informative, giving you total confidence in delivering an amazing English class when you start. Plus, our TEFL courses have been rated an amazing 4.5 stars by our happy graduates!

#### THE 120 HOUR ONLINE TEFL COURSE IN A NUTSHELL:

- Essential 120 Hour Online TEFL Course
- Flexible studying 24/7
- Study online on your tablet, computer or phone
- Access to unrivalled tutor support throughout
- Regulated by the UK and US Government
- Recognised by employers around the world



CHECK OUT OUR TEFL COURSES TO READ MORE >>





# Course Breakdown

In case you're curious, here's a brief summary of the modules you'll complete during the [120 Hour Online TEFL Course](#):

## PLANNING A LESSON

### Module 1

In the first module, you'll learn the art of lesson planning – the essential tool of any good TEFL teacher. Planning a fun and engaging lesson will not only help your students but it'll also give you confidence and a strong foundation to base your class on. You'll cover:

- Teaching methodologies
- What to include in a lesson plan
- How to set out a lesson plan
- Adapting your lesson for different types of classes

And by the end of the module, you'll have the skills to produce a well-structured lesson plan for a variety of ages and class sizes.

## LESSON CONTENT

### Module 2

So, now you know how to structure a lesson plan, next on the checklist is learning which content to cover in your lessons. You'll go through:

- Vocabulary
- Grammar
- The four key skills: reading, writing, listening, and speaking

Don't worry! It's all content that you already know from speaking English, so you'll just be refreshing your knowledge and learning how to adapt it into lesson plan form.

## MAKING IT WORK IN THE CLASSROOM

### Module 3

Once you've got the theory down to a tee, you'll find out how to manage your teaching environment to make it easier for your students to learn. You'll find out how to:

- Create a good teaching environment for your students
- Use different approaches to help your students learn
- Deal with problems as they arise



## COURSE ASSESSMENT

### Module 4

The Course Assessment is designed to check your knowledge of the previous 3 modules. To pass the course, you'll need to complete all three stages to a satisfactory level:

1. The end-of-course test: this is a multiple-choice quiz with 58 questions based on the course material and you'll need to achieve 75% or above to pass.
2. Lesson plan: we'll give you a choice of scenarios and age groups to base your lesson plan on. You'll just need to fill in the lesson plan template and submit it to your tutor for grading.
3. Essay: you'll need to write 1,000-1,500 words to explain the thinking behind your lesson plan. This will also be submitted to your tutor for grading.



CHECK OUT OUR 120H ONLINE TEFL COURSE >>



# YOUR SPECIALIST Courses

## Teaching in South Korea Course

As part of this course you'll build on the TEFL skills you gained in your 120 Hour TEFL Course and learn how to effectively teach English to South Korean students, including why Koreans need English, what the education system in South Korea is like, beliefs about English. Plus, you'll also learn about visas, qualifications, and salaries in South Korea.

## Classroom Behaviour Course

Learn how to effectively manage pupil behaviour in your TEFL classroom with our Classroom Behaviour Course. From making a strong first impression and creating a positive learning environment to working with children with Special Education Needs and managing conflict - you'll be a behaviour expert by the end of this course.

## Confidence Building Course

We know how daunting it can be taking your first steps into the TEFL classroom as a newly qualified teacher, that's why we've included this specialist course to give your confidence the boost it needs.

## Writing Travel Blogs

Whether you want to make some extra money, start a new hobby, or make your Instagram followers green with envy, this course will teach you how to write high-quality blogs and is a great skill to have as an English teacher.



## YOUR SPECIALIST COURSE BREAKDOWN

### Teaching in South Korea Course

- Introduction to teaching in South Korea
- South Korea Culture
- Why Koreans need English
- The Education System
- School Life
- Beliefs about English
- Visa, Qualifications, and Salaries

### Classroom Behaviour Course

- Key theories of behaviour
- How to make a strong first impression
- Creating positive learning environments
- Working with children with Special Education Needs (SEN)
- Managing conflict and confrontations

### Confidence Building Course

- Reasons for feeling confident and lacking confidence
- Effective participation in social situations
- Ways to manage stress
- Being able to set goals for self-development

### Writing Travel Blogs Course

- The fundamentals of blog writing
- Technical aspects of blog writing
- Putting it all together
- Writing the blog

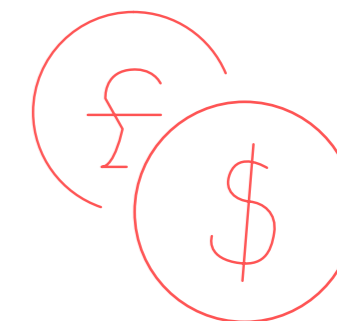


# WHAT'S MY ROLE?

Although you'll be teaching the classes independently, it's likely you'll have a teaching assistant to give you a helping hand when needed! This way, you'll get some brilliant first-hand teaching experience, plus support from our in-country partner.

## Your role as a TEFL Teacher consists of:

- Teaching the school children engaging English lessons
- Creating lesson plans, resources and marking
- Conversing with the schoolchildren in English
- 40 working hours per week (23-30 of which are teaching contract time)
- Becoming everyone's favourite new teacher!



## Let's talk money!

You'll be earning a salary of US\$1700-1900 (£1,200-1,350) per month, what you do with your salary is completely up to you. We know we'd be spending ours on one of the year-round festivals South Korea has to offer or hit up one of the world famous K-pop concerts.

**BONUS:** Once you complete your placement, you'll also get a US\$1700-1900 (£1,200-1,350) completion bonus to say a big thank you! Perfect for boosting your future travels fund!





## WHERE WILL I BE PLACED?

The Internship will take place in amazing destinations across South Korea, including Seoul, Incheon, Daejeon, Daegu and Busan.

Our dedicated and experienced in-country partners will match you with the most suitable school and accommodation.

With over 27 years' experience of sending TEFLers abroad, you can rest assured that the accommodation and schools we select have been given our expert seal of approval!





# WHAT'S THE COST?

## What's included:

- Your 120 Hour TEFL Course
- Teaching in South Korea Course
- Classroom Behaviour Course
- Confidence Building Course
- Writing Travel Blogs Course
- Monthly salary of US\$1700-1900 (£1,200-1,350) – paid in South Korean Won – a very good salary for TEFL teachers!
- End of contract bonus of US\$1700-1900 (£1,200-1,350) – teachers often use this to help fund a trip around Asia, or start their next TEFL adventure
- Access to consistent support from your booking date until the end of your trip
- Placement in a suitable school
- Free private studio apartment near your school
- Local activities arranged by our in-country team
- Assistance with visas/applications
- Local welfare and academic support from our in-country team
- One-way flight reimbursement
- Ongoing in-country support
- Academic support and advice on future employment
- Paid holidays – plenty of opportunities to explore South Korea!
- Possibility to extend your contract for an extra year



## What's not included:

**ONE-WAY FLIGHT** - Prices on flights will vary depending on where you're flying from. We recommend checking out Skyscanner for a bargain flight – don't forget you'll be reimbursed for one of your flights!

**VISA** - Visa - \$205 for an E2 Visa, plus apostille and courier fees

**POLICE CHECK** - Costs vary from country to country, generally speaking it will be around \$30-\$120

**MEDICAL CHECK** - Medical check-up on arrival, approx. US\$100

**TRAVEL INSURANCE** - Prices can vary – remember, your school will cover 50% of medical health insurance

**UTILITY BILLS** - Costs will vary – generally utilities will cost around US\$40-150 per month depending on the season

**OTHER COSTS** - On a very basic budget you can get by on US\$20 per day (food and transport only)



## EVERYDAY ESSENTIALS

- Restaurant meal - 20,000 KRW (£13 / US\$17)
- Bottle of local beer – 2,600 KRW (£1.70 / US\$2.25)
- Subway ride – 2,300 KRW (£1.50 / US\$2)
- Travel between cities – 17,900-60,000 KRW (£11-40 / US\$15-50)



# FREQUENTLY ASKED Questions

## Q: HOW MANY HOURS WILL I BE TEACHING EACH WEEK?

You'll work for up to 40 hours. Up to 23-30 hours will be contracted to face-to-face teaching and up to another 10-17 will be for preparing lessons, attending meetings and other teaching-related activities!

## Q: WHAT TYPE OF SCHOOL WILL I BE TEACHING AT?

There are two main types of schools that we place people with in Korea: Public Schools and Private Language Centres. The type you end up at will depend when you head off on your Internship. Language centres operate throughout the year, whereas the public school year runs from March to January.

## Q: CAN I GET A DISCOUNT IF I'VE ALREADY TAKEN A TEFL COURSE?

Yes! If you're already qualified, give our team a call on +44 (0) 113 205 4610 for more information.

## Q: WHAT WILL MY WORKING HOURS BE?

Typical school hours are 8:30am-4:30pm Mon-Fri for public school. Language schools are open for extended hours between 9am-10pm. The shift you will work depend on the age group you are teaching. Generally, kindergarten and elementary teachers primarily work from 9am until 6pm. Elementary and middle school teachers usually start around 1pm until 10pm.

## Q: HOW MANY STUDENTS WILL BE IN MY CLASS?

Class sizes vary between public schools and language school. Public school classes tend to have around 20-30 students per class, whereas language schools are smaller – they usually only have 8-15 students per class.

## Q: WILL THERE BE ANY OTHER TEFL TEACHERS AT MY SCHOOL?

If you work at a language school there is generally more than 1 TEFL teacher, however if you're placed at a public school you may be the only TEFL teacher at your school – don't worry though, South Korea has an amazing expat network and you'll have the friends you met at your orientation too!

## Q: WILL I NEED TRAVEL INSURANCE?

Yes! Wherever you're from, you will need to book travel insurance and make sure it covers you for the full duration of the role.

## Q: WHAT WILL MY ACCOMMODATION BE LIKE?

As part of your internship you will be provided with a studio apartment near your school. Accommodation in South Korea can be small compared to western standards, however you'll have everything you need in your apartment and there will be plenty of space for 1 person to live comfortably.





# South Korea

IS WAITING...



[View Internship »](#)



[Register your interest »](#)



[Book a free call »](#)

## EXPLORE SOME MORE

*other trips you might be interested in...*

