

EUROPE

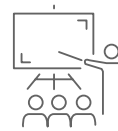
TEFL Key Facts

- ✓ Fluent English (native English often required)
- ✓ Bachelor's degree for some countries
- ✓ TEFL certification - Trinity TESOL, CELTA or recognised Level 5 TEFL qualification usually required for western European posts. Requirements are less stringent in Eastern Europe



TYPICAL JOBS

- Private language centres
- Summer camps
- Public and private schools
- Private tuition



TYPICAL STUDENTS

- Business professionals
- Children

» Europe is an enticing jumble of nationalities and cultures in every corner of its 47 countries



PEAK HIRING PERIODS

- Year round in private language centres
- Most jobs in schools start in either Sept or Jan, with applications from around 3 months in advance



VISA REQUIREMENTS

- EU members can work in any other part of the EU without visa restrictions
- Work visa/permit normally required for other parts
- Employers should provide documentation and will sometimes cover visa application costs

GOOD TO KNOW

EU member states often only recruit from within the EU, due to legal restrictions. If you're from a non-EU country you'll normally need to go through a government sponsored scheme.

Fact file:
**POPULAR
 DESTINATIONS**



CZECH REPUBLIC

Age
N/A

Degree
BA/BSc

Restrictions
EU citizens preferred

Hiring Process
Face-to-face

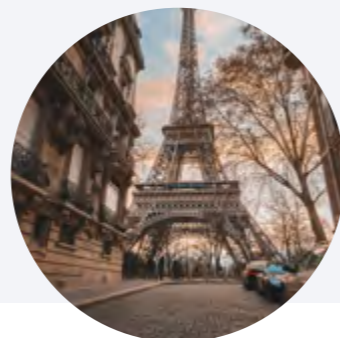
Contract
10-12 months

Pay
\$850-\$1,300

Visa
EU passport/Work

Monthly costs
\$750-\$1,500

Face-to-face
 interview in country
 or by phone / video
 call



FRANCE

Age
21-60

Degree
BA/BSc

Restrictions
EU citizens preferred

Hiring Process
Face-to-face

Contract
0.5-12 months

Pay
\$1,000-\$2,000

Visa
**EU passport/Work/
 Student**

Monthly costs
\$1,250-1,750

TAPIF/FACC
 programmes can be
 routes in for non-EU
 citizens

10-12 months
 contracts for
 language centres and
 2 weeks-3 months
 contracts for summer
 camps



GERMANY

Age
21-65

Degree
BA/BSc

Restrictions
EU citizens preferred

Hiring Process
Face-to-face

Contract
10-12 months

Pay
\$900-\$2,200

Visa
EU passport/Work

Monthly costs
\$1,000-\$2,000

Most teaching jobs
 are with adults



GREECE

Age
N/A

Degree
BA/BSc

Restrictions
EU citizens preferred

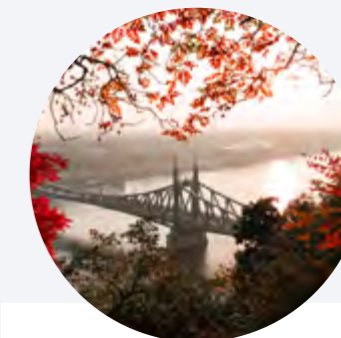
Hiring Process
Face-to-face

Contract
10-12 months

Pay
\$800-\$1,200

Visa
EU passport/Work

Monthly costs
\$800-\$1,200



HUNGARY

Age
N/A

Degree
BA/BSc

Restrictions
EU citizens preferred

Hiring Process
Face-to-face

Contract
10-12 months

Pay
\$650-\$950

Visa
**EU passport/Work/
 Tourist**

Monthly costs
\$600-\$900

Face-to-face
 interview in country
 or by phone / video
 call

POPULAR DESTINATIONS



ITALY

Age
21-60

Degree
BA/BSc

Restrictions
EU citizens preferred

Hiring Process
Face-to-face

Contract
0.5-12 months

Pay
\$1,000-\$1,750

Visa
**EU passport/Work/
Student**

Monthly costs
\$900-\$1,100

10-12 months contracts for language centres and 2 weeks-3 months contracts for summer camps



POLAND

Age
21+

Degree
BA/BSc

Restrictions
EU citizens preferred

Hiring Process
Face-to-face/phone

Contract
9-12 months

Pay
\$750-\$1,000

Visa
EU passport/Work

Monthly costs
\$750-\$1,000

CELTA / Trinity
TESOL desirable

Teaching experience desirable

EU citizens strongly preferred



PORTUGAL

Age
N/A

Degree
BA/BSc

Restrictions
EU citizens preferred

Hiring Process
Face-to-face

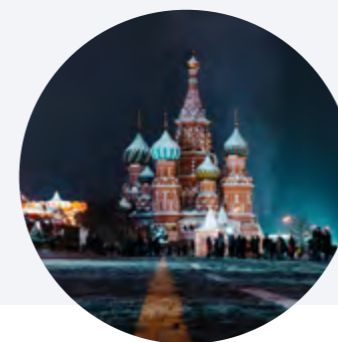
Contract
10-12 months

Pay
\$1,200-\$1,700

Visa
EU passport/Work

Monthly costs
\$1,200-\$1,700

Teaching experience desirable



RUSSIA

Age
21-60

Degree
BA/BSc

Restrictions
Native speaker

Hiring Process
Face-to-face/phone

Contract
12 months

Pay
\$500-\$1,750

Visa
Work

Monthly costs
\$500-\$1,500

Degree is preferred but not essential

Native English speakers desirable

Teaching experience sometimes required

Flight sometimes included



SLOVAKIA

Age
N/A

Degree
BA/BSc

Restrictions
Teaching experience

Hiring Process
Face-to-face/phone

Contract
10-12 months

Pay
\$450-\$950

Visa
EU passport/Work

Monthly costs
\$500-\$800

Degree is preferred but not essential

EU citizen strongly preferred



SLOVENIA

Age
N/A

Degree
BA/BSc

Restrictions
EU citizens preferred

Hiring Process
Face-to-face/phone

Contract
10-12 months

Pay
\$750-\$1,200

Visa
**EU passport/Work/
Student**

Monthly costs
\$750-\$1,200

Degree is preferred but not essential

Teaching experience desirable

POPULAR DESTINATIONS



SPAIN

Age

21-60

Degree

BA/BSc

Restrictions

EU citizens preferred

Hiring Process

Face-to-face

Contract

10-12 months

Pay

\$800-\$2,000

Visa

**EU passport/Work/
Student**

Monthly costs

\$1,000-\$1,900

Degree is preferred
but not essential



TURKEY

Age

Under 65

Degree

BA/BSc

Restrictions

Teaching experience

Hiring Process

Face-to-face/phone

Contract

12 months

Pay

\$750-\$1,500

Visa

Work/Tourist

Monthly costs

\$500-\$1,000

Degree is preferred
but not essential

Native English
speaker desirable

MORE ABOUT EUROPE...

With centuries of history bumping against modern life around every corner of its 47 countries, Europe is an enticing jumble of nationalities and cultures. Throw in TEFL opportunities galore and it's hardly surprising Europe has long been a top TEFL destination.

Competition for TEFL jobs is fierce in much of western Europe - you'll generally need a good TEFL certificate, Bachelor's degree and previous teaching experience to have a chance of paid TEFL work here. However, there are bucket loads of opportunities for newly qualified TEFL teachers in eastern European countries, where English teachers are in high demand and requirements less stringent.

Wages aren't brilliant across the continent, particularly when compared to the generally high costs of living. Europe is not the place to come to make your fortune in TEFL. However, you should earn enough for a decent standard of living, particularly if you top up your wages with private tuition.

One big factor in Europe is the European Union (EU), which allows EU citizens to work in any other country in the EU bloc without the need for a visa. For EU passport holders, this makes working across Europe enticing - you can simply turn up and look for work. On the flip side, if you're a non-EU citizen, you're largely shut out of this market unless you apply through a state-sponsored programme. If this option doesn't appeal, why not base yourself in one of the fascinating European countries outside of the EU bloc and use your free time to explore the rest of the continent? The close proximity and good travel transport links make this an exciting and viable option. Europe is a continent you'll definitely want to experience!